



Doing it Right!

 **BEETEC**[®]

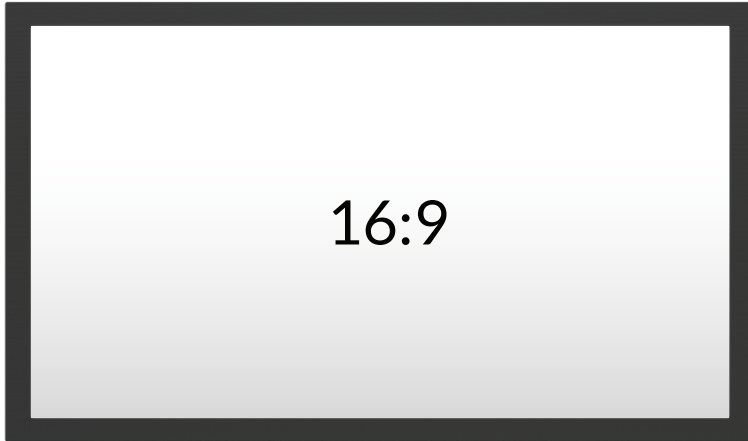


تك فورت للتجارة العامة ش م م

TECHFORT

FRAMED FIXED SCREEN

ELEGANT DESIGN & SUPERIOR MATERIAL CHOICES



16:9 Framed Fixed Screen 2213x1425mm, 100"

Format:	16:9
Size:	100"
Border:	4,5 cm
Weight:	8 kg
Border Color:	Black

Warranty:	1 year
Frame Material:	Aluminum Alloy
Fabric Material:	Soft Metal Silver 3D Anti-light PVC Fabric
Frame Size:	Ultra narrow edge 10mm
View Area:	2213*1425mm
Format:	16:9 100 inch
Support Resolution:	4K Projector



This **projection screen** surface is optimized for any user striving to get the best picture quality for their fixed frame solution. Overall the M Grey Plus generally provides higher contrast and better colour rendering than a standardized matte white projection screen surface.

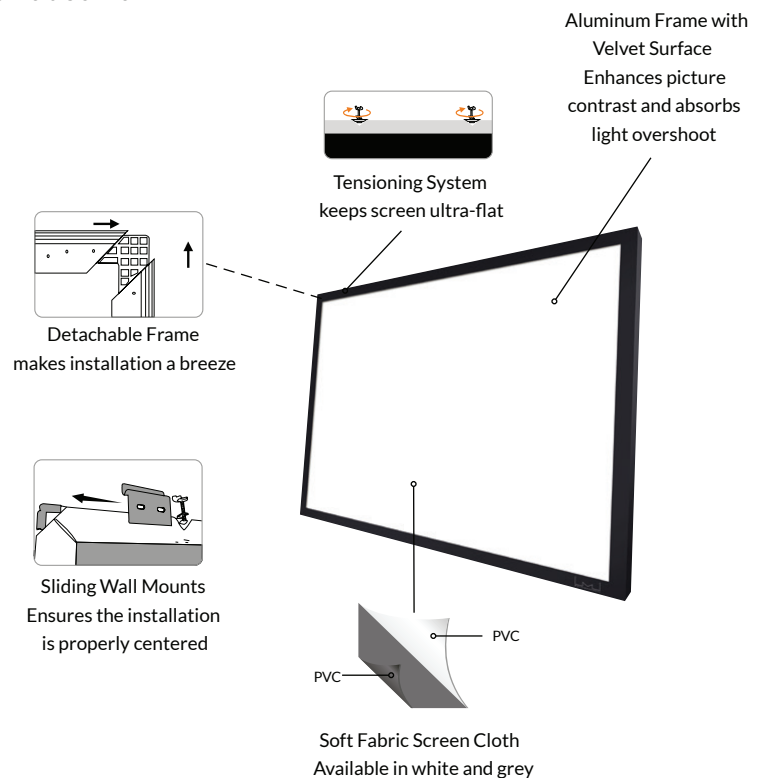


Features of Screen

- * High quality spraying painting metal casing is shaped by punch machine, strong and elegant, white color is available
- * Use the best quality screen fabric to ensure perfect flat surface
- * Equipped with stable quality
- * Ease of installation, wall mounted

Main applications

Education, Business presentation, Hotel, Cinema, Entertainment venues etc



FRAMED PROJECTION SCREENS

- Multiple aspect ratios available: 16:9
- Highly versatile 1.0 flat-tensioned screen material with standard black backing to eliminate light penetration.
- Aluminum contour frame surfaced with black velvet to enhance picture contrast and absorb light overshoot.
- Slide-on wall mount is horizontally adjustable for easy centering.
- Designed for high performance Home Cinema Projectors.



16:9 Framed Fixed Screen

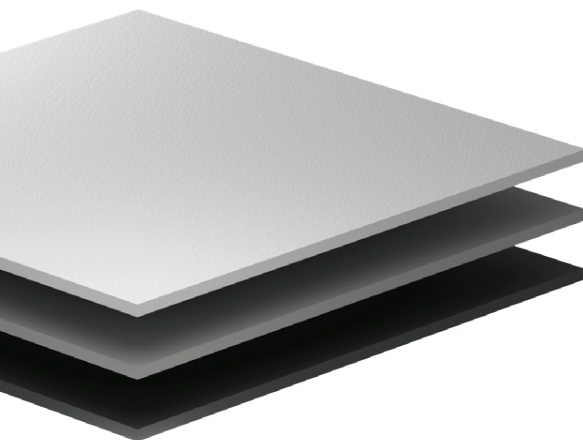
Size:	Projection Area:	Frame colour:	Surface:	Single package measurements:	Warranty:
100"	2,21 x 1,26 m	Black	Grey	240 x 22 x 14 cm	1 year
120"	2,65x1,49 m	Black	Grey	283 x 22 x 14 cm	1 year

M Grey Plus projection screen surface ensures a dramatic improvement of contrast display for any projector.

M Grey Plus is available in all fixed framed screens sizes, and is purchased separately.

GAIN:SCREEN REFLECTIVITY

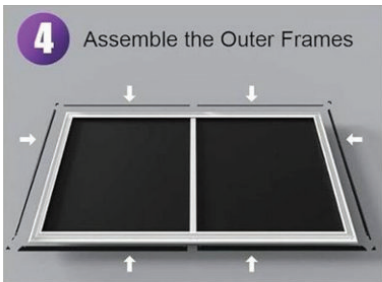
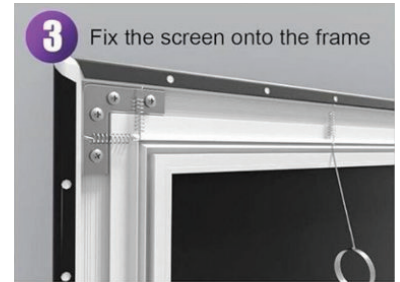
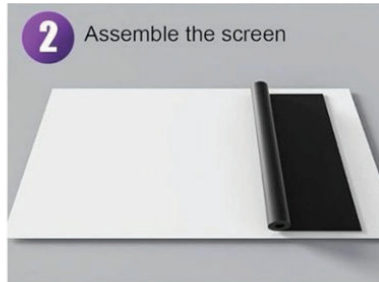
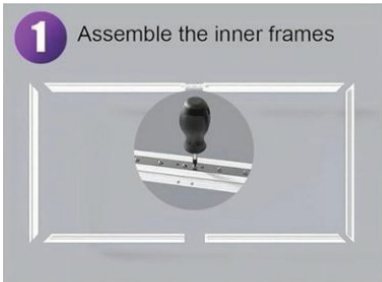
The image luminance is the overall image brightness created by the combination of projector output and screen reflectivity. Projection screens vary in their reflective properties. The reflective neutral matte white screen is typically 1.0 gain but can vary as high as 1.4 in its reflectivity. Negative gain projection screens are designed to enhance



FRAMED PROJECTION SCREENS



INSTALLATION GUIDE





Doing it Right!

Doing it Right!

+971 50 950 9334

+971 4 558 7680

info@techfortme.com

www.techfortme.com

Office 26, Al Suwaidi Sons Building,
Nakheel Road, Deira, Dubai, UAE

تك فورت للتجارة العامة ش م م

TECHFORT